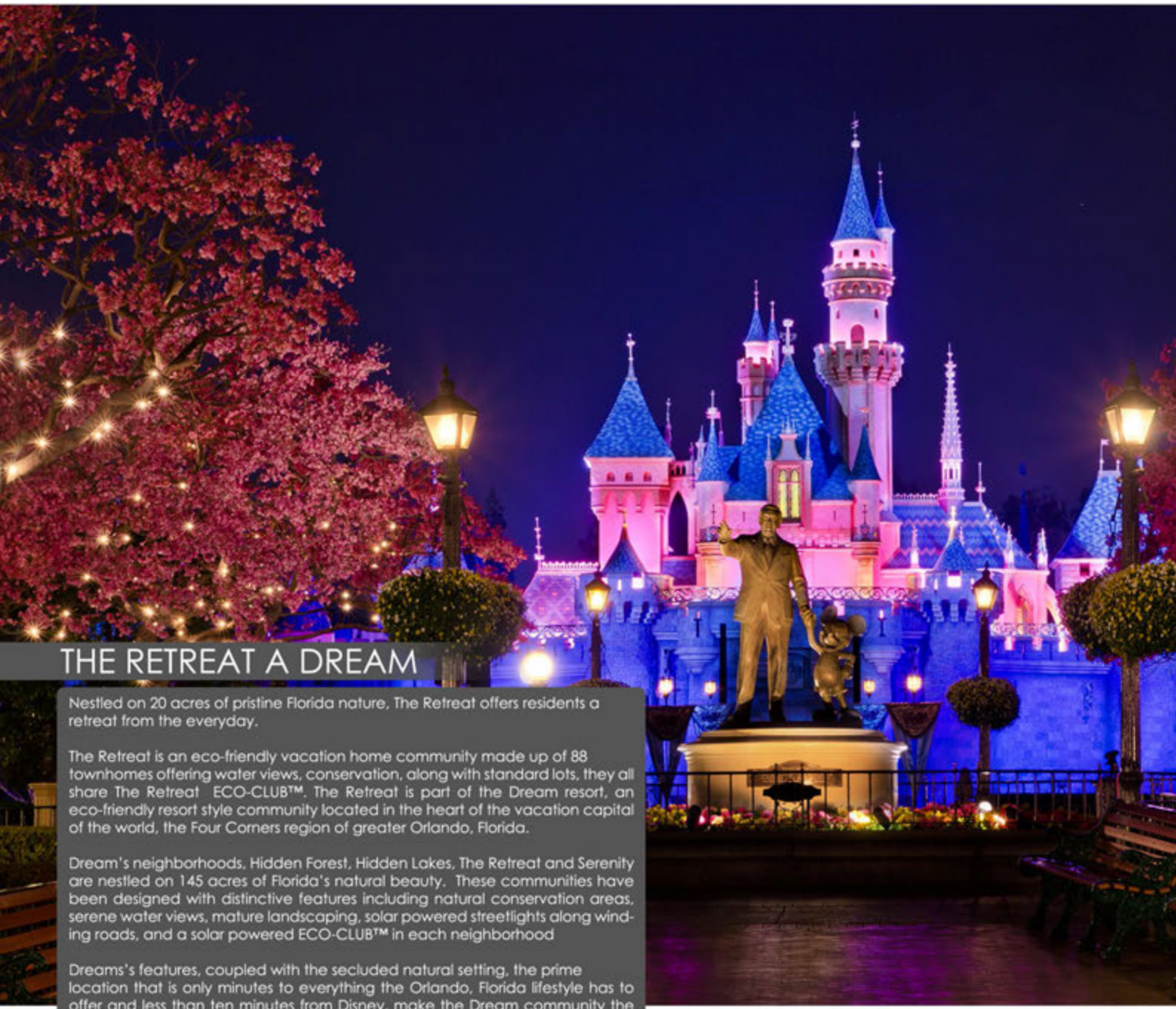




THE RETREAT  
TOWNHOMES



## THE RETREAT A DREAM

Nestled on 20 acres of pristine Florida nature, The Retreat offers residents a retreat from the everyday.

The Retreat is an eco-friendly vacation home community made up of 88 townhomes offering water views, conservation, along with standard lots, they all share The Retreat ECO-CLUB™. The Retreat is part of the Dream resort, an eco-friendly resort style community located in the heart of the vacation capital of the world, the Four Corners region of greater Orlando, Florida.

Dream's neighborhoods, Hidden Forest, Hidden Lakes, The Retreat and Serenity are nestled on 145 acres of Florida's natural beauty. These communities have been designed with distinctive features including natural conservation areas, serene water views, mature landscaping, solar powered streetlights along wind-offer roads, and a solar powered ECO-CLUB™ in each neighborhood

Dream's features, coupled with the secluded natural setting, the prime location that is only minutes to everything the Orlando, Florida lifestyle has to offer and less than ten minutes from Disney, make the Dream community the perfect place to call home.



All plans and elevations are artist renderings and may vary somewhat in precise detail and dimensions. All measurements are approximate. Builder reserves the right to change or alter materials, specifications, features, dimensions, designs and price without prior notice.



ZENODROHOMES



## ZEN-ECO HOME™

The Retreat features our newest innovation, ZEN-ECO HOME™; these homes are crafted with the latest construction technologies and modern interior design. At Zenodro ECO has two meanings, first and foremost we seek to build ECO-logically friendly homes by implementing today's best building practices such as the use of energy efficient appliances, Low E double pane insulated windows, high performance air conditioning systems, high performance spray foam insulation, and solar powered street lights. These are some of the steps Zenodro has taken in crafting your home in order to help reduce energy consumption and improve the quality of life for you, our future homeowners.

Secondly, our homes and communities are built ECO-nomically friendly. When compared to conventionally built homes, a ZEN-ECO HOME™ is capable of delivering a significant reduction in the cost of home ownership.



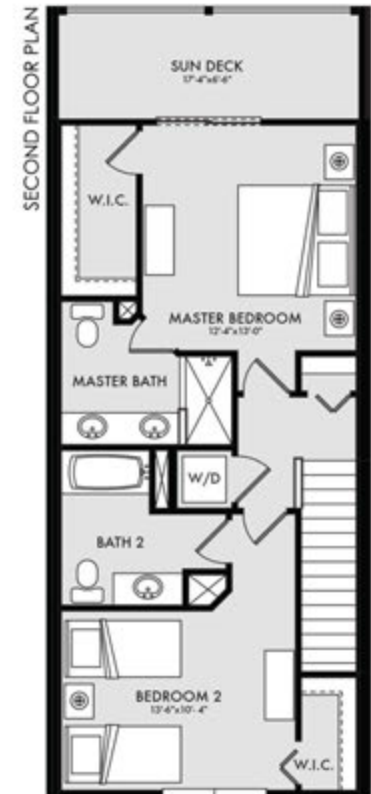
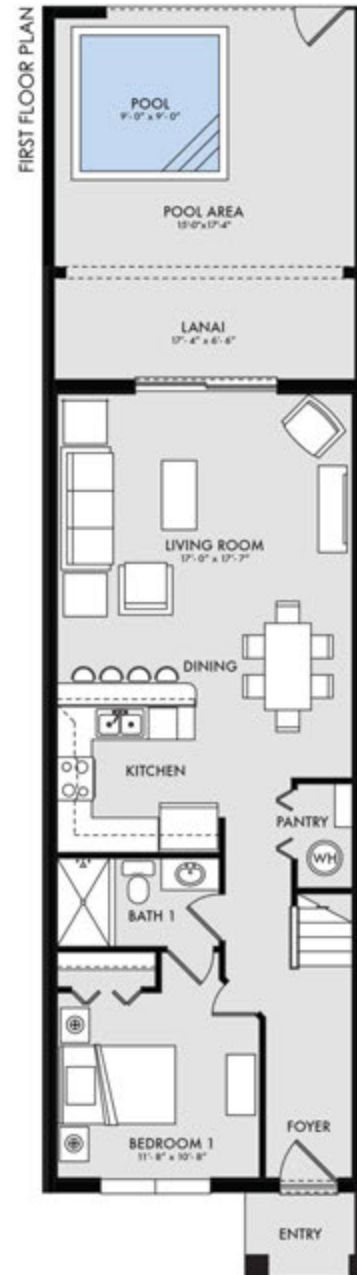
All plans and elevations are artist renderings and may vary somewhat in precise detail and dimensions. All measurements are approximate. Builder reserves the right to change or alter materials, specifications, features, dimensions, designs and price without prior notice.



ZENODROHOMES

ELIORA 2,153 TOTAL SQUARE FOOTAGE

2,038 TOTAL SQUARE FOOTAGE ADALIA



All plans and elevations are artist renderings and may vary somewhat in precise detail and dimensions. All measurements are approximate. Builder reserves the right to change or alter materials, specifications, features, dimensions, designs and price without prior notice.



ZENODROHOMES

# BUILDING PLAN & UNIT DETAILS



## ZEN-ECO STANDARDS

- 14 Seer Variable Speed A/C System
- Fresh Air Damper System
- Aluminum Energy Efficient Low E
- 9'0" Wide 8' 0" High Sliding Glass Doors
- Attic and Framed Wall Spray Foam Insulation
- Block Wall Core Filled Masonry Insulation
- Energy Star Rated Appliances
- Designer Low Flow Water Fixtures
- Remotely Controlled and Programmable Thermostats
- Solar Powered Street Lights
- Energy Efficient Double Pane Insulated Tilt Sash Low E Vinyl Windows

## KITCHEN

- European Style Wood Cabinets with Thermalfall Doors and Stainless Steel Hardware
- Stainless Steel Energy Package: Electric Range with Oven and Glass Cooktop, Over the Range Microwave, Dishwasher, and Side by Side Refrigerator with Built-in Icemaker and Water Dispenser
- Granite Countertops with 4" Backsplash
- Granite Breakfast Bar
- Designer Kitchen Faucet
- Walk-In Pantry

## BATHROOMS

- 24" Ceramic Tile Floor
- Ceramic Tile Shower with Accent Tile
- Designer Wall Mounted Scances
- Elongated Low Flow Toilets
- European Style Wood Cabinets with Thermalfall Doors and Stainless Steel Hardware
- Granite Countertops with 4" Backsplash
- Designer Bath, Shower, and Sink Faucets with Matching Bathroom Hardware

## MASTER BEDROOM

- En-suite Master Bathroom
- Large Walk-In Closet
- Private Sun Deck
- Upgraded Carpet and Padding

## SECONDARY BEDROOMS

- En-suite Bathroom
- Upgraded Carpet and Padding
- Walk-In Closet

## EXTERIORS

- Aluminum Screen Enclosure
- Brick Paver Patios and Entry Porches
- Fully Landscaped Home Site
- Rain Gutters Throughout
- Private Heated Pool
- Upgraded 6-Panel Front Door

## OPTIONS

- Premium Options are available for Appliances, Back Splashes, Counter Tops, Fan Package, Flooring, Paint, and Plumbing Fixtures

## LIVING AREAS

- 9' 4" High Ceilings on 1st Floor
- 9' 0" High Ceilings on 2nd Floor
- 24" Ceramic Tile Throughout First Floor
- 5 1/4" Colonial Style Wood Baseboard
- 3 1/4" Colonial Style Wood Casing
- Designer Window Sills
- Stacked Washer and Dryer Laundry Center
- Recessed Lighting
- Upgraded Carpet and Padding on Stairs and 2nd Floor Common Areas



All plans and elevations are artist renderings and may vary somewhat in precise detail and dimensions. All measurements are approximate. Builder reserves the right to change or alter materials, specifications, features, dimensions, designs and price without prior notice.



**ZENODROHOMES**



## ECO-CLUB™

The Retreat ECO-CLUB™ offers you and your guest amenities such as a fitness center, game room, sun bathing area, covered outdoor seating, hot tub, resort style pool and restrooms to ensure that your vacation is perfect in every way.



All plans and elevations are artist renderings and may vary somewhat in precise detail and dimensions. All measurements are approximate. Builder reserves the right to change or alter materials, specifications, features, dimensions, designs and price without prior notice.



# ZENODROHOMES

CONSERVATION AREA



POND



COMMUNITY PLAN & LOCATION MAP

AMUSEMENT PARKS

- Animal Kingdom 10 Min
- Epcot 10 Min
- Hollywood Studios 10 Min
- Magic Kingdom 10 Min
- SeaWorld 15 Min
- Universal Studios 20 Min

GOLFING

- Highlands Reserve Golf 5 Min
- Legends Golf & Country Club 10 Min
- Orange County National Golf 10 Min
- Orange Lake Golf 5 Min
- Polo Park East Golf 5 Min
- Walt Disney World Resort Golf 10 Min

GROCERIES

- Publix 5 Min
- Publix 5 Min
- Target 5 Min
- Walgreens 5 Min
- Walmart 24hrs 5 Min

SHOPPING

- Flamingo Crossings 10 Min
- Florida Mall 25 Min
- Premium Outlets 15 Min
- Premium Outlets 25 Min
- Mall at Millenia 25 Min

Escape from the everyday!

Make your next Vacation Home a ZEN-ECO HOME™ at The Retreat.



All plans and elevations are artist renderings and may vary somewhat in precise detail and dimensions. All measurements are approximate. Builder reserves the right to change or alter materials, specifications, features, dimensions, designs and price without prior notice.



ZENODROHOMES



17343 Serenidad Boulevard | Clermont | Florida | 34714  
P. 407-831-4600 | F. 407-831-4601 | [www.zenodro.com](http://www.zenodro.com)

